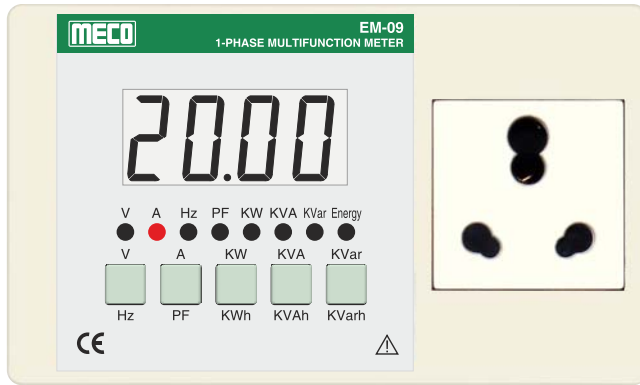




MECO supports Bureau of Energy Efficiency (BEE), Govt. of India's mission to institutionalize certification of Electric / Electronic goods for ECOMARK under Gazette of India



EM-09 (20A),

EM-09 (5A),

EM-09 (1A)

Features

- Measures V, A, PF, Hz, KW, KVA, KVAr, KWh, KVAh & KVArh
- TRMS Measurement
- Can be used for Continuous Monitoring
- Auto / Manual Scroll Display (User Selectable)
- State of Art Microcontroller Design
- Portable, Easy to Carry and Simple to Use
- LCD Display with Backlight (White)
- RS 485 Port (4kV Isolated) with MODBUS RTU Protocol (Optional)
- POWER MASTER Software for MIS Reports (Optional)

Specification

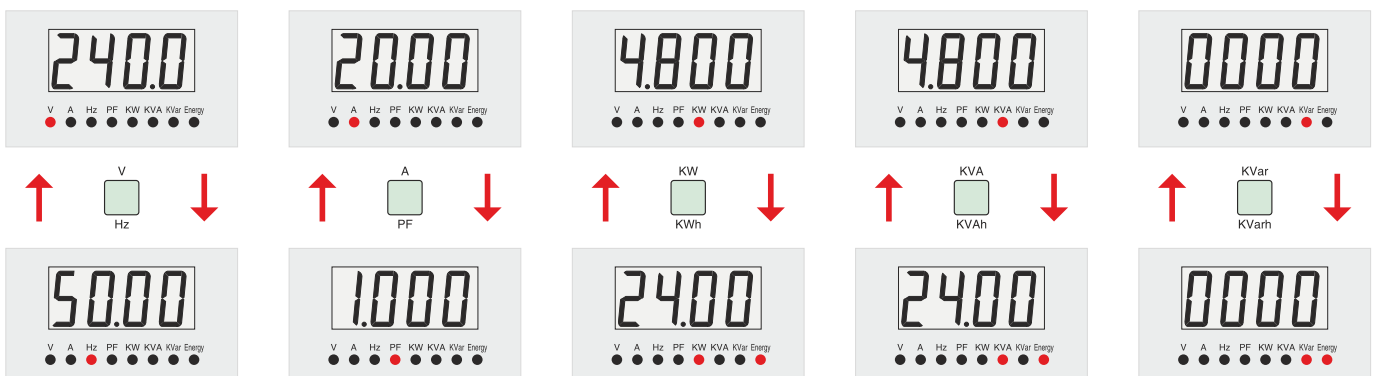
Functions	EM-09 (20A)	EM-09 (5A)	EM-09 (1A)	Accuracy
RMS Voltage	85~265Vrms			±(0.5% FS +1 dgt.)
RMS Current	(0.900A ~ 24Arms)	(0.125A ~ 6.0Arms)	(0.025A ~ 1.2Arms)	
Active Power	0.216 ~ 5.300 KW	0.030 ~ 1.590 KW	0.006 ~ 0.318 KW	±(0.5% FS +1 dgt.) [Cosφ=0.3 to 1.000]
Apparent Power	0.216 ~ 5.300 KVA	0.030 ~ 1.590 KVA	0.006 ~ 0.318 KVA	±(0.5% FS +1 dgt.)
Reactive Power	0.216 ~ 5.300 KVAr	0.030 ~ 1.590 KVAr	0.006 ~ 0.318 KVAr	±(1.0% FS +1 dgt.) [Sinφ=0.3 to 1.000]
Power Factor	0.3 Lag ~ 1.0 ~ 0.3 Lead			±(0.01 PF +1 dgt.)
Line Frequency	45.00 ~ 55.00 Hz			±0.1 Hz
Active Energy (KWh)	0000 ~ 9999 KWh			Class 1
Apparent Energy (KVAh)	0000 ~ 9999 KVAh			
Reactive Energy (KVArh)	0000 ~ 9999 KVArh			

Note : KW / KVA / KVAr Measurements require Vrms x Irms x Cosφ/Sinφ ≥ 0.006 (for 1A Meter), ≥ 0.030 (for 5A Meter) and ≥ 0.216 (for 20A Meter)

Model	EM-09 (20A)	EM-09 (1A/5A)
Case / Housing	ABS Case Suitable for Desktop Mounting / Portable / Wall Mounting Application	
Socket & Plug	6A / 20A Multi Socket & 20A Plug	6A Socket & 6A Plug
Auxiliary Power Supply	85-265V AC Supplied with 1 Phase Power Cord	
Dimensions (mm)	164 x 100 x 65mm (approx.)	

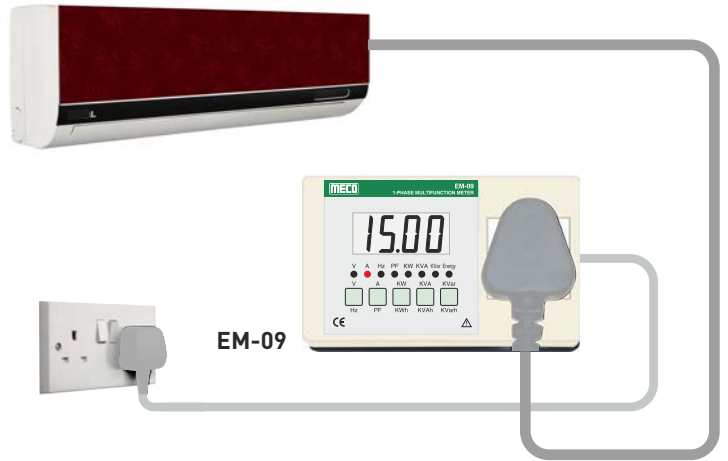
Ordering Information : Model, Input Current (20A or 5A or 1A any one only) & RS485 Port (Optional)

Display Pages



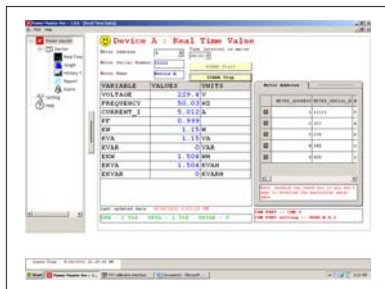
Application

- Appliances Testing (AC, Refrigerator, Washing Machine etc.)
- LED Lights Testing
- Can be given to Field Technicians in their Tool Kit
- Energy Audit and Plant Maintenance
- Studying Energy Efficiency of Electrical Equipment
- Building Management Systems
- Power Management
- Product Quality Testing

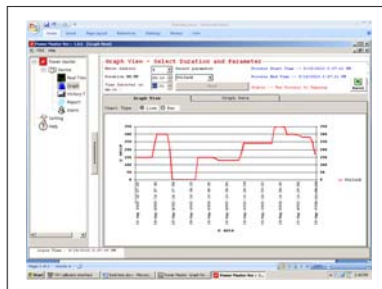


many more ...

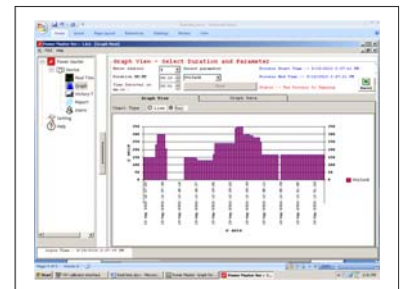
POWER MASTER Software



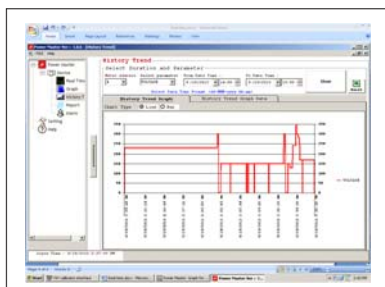
REAL TIME DISPLAY



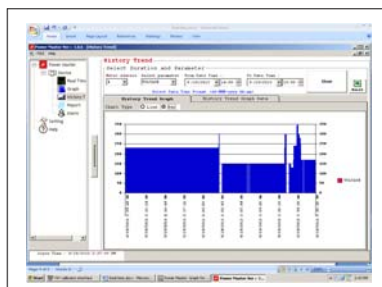
LINE GRAPH DISPLAY



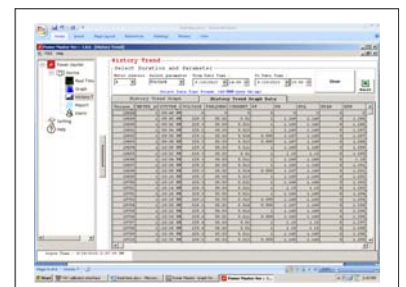
BAR GRAPH DISPLAY



HISTORY TREND - LINE GRAPH DISPLAY



HISTORY TREND - BAR GRAPH DISPLAY



REPORT VIEW DISPLAY